



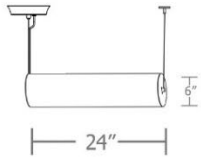
## i.rod.6.hrz™ 5-slider

your lighting rep has  
recommended the **i.rod.6.hrz™**  
cylinder pendant for your project  
Let's take a quick look:



## sizes and lumens

**P9124**



**P9148**



**P9172**

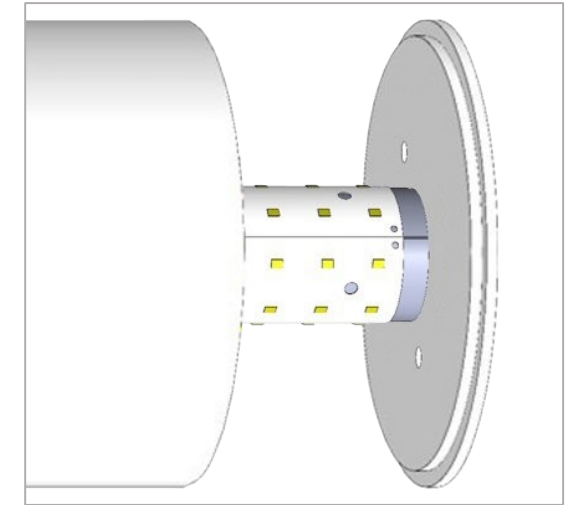
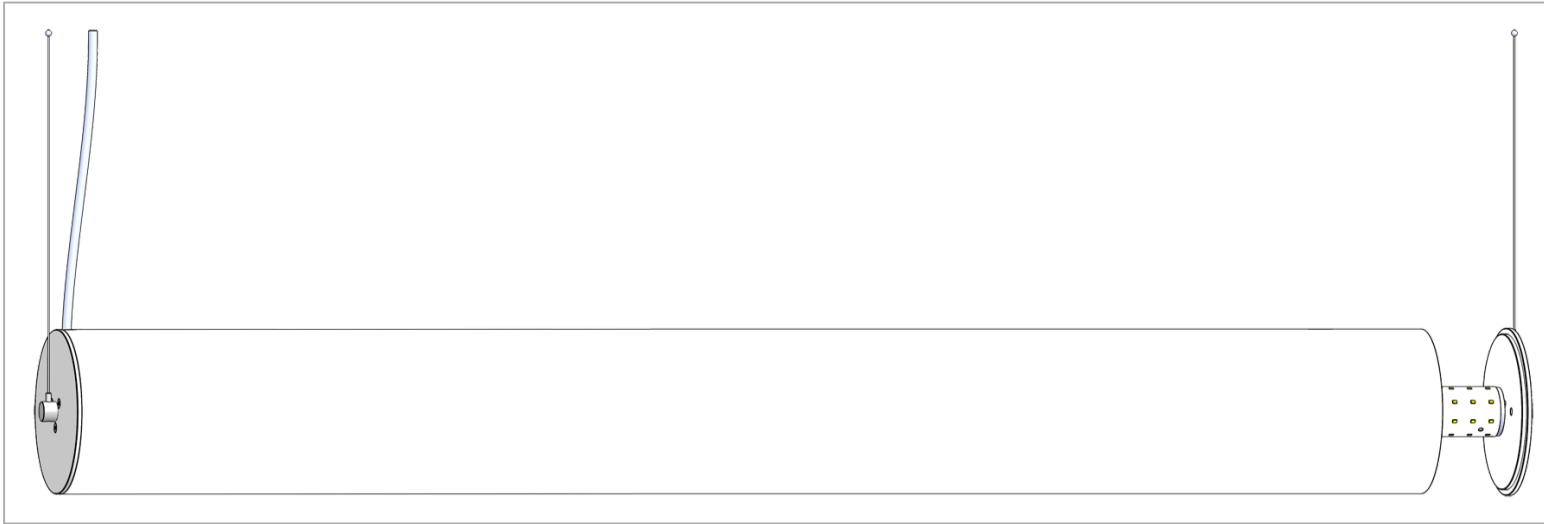


- P9124 (24") / 1200 – 3200 lm (custom lumens)
- P9148 (48") / 2400 – 6450 lm (custom lumens)
- P9172 (72") / 3600 – 9100 lm (custom lumens)



## construction

canopy mounted driver, constant current, field maintainable, universal input (120-277v), 0-10v controllable to 1% dimming.



.100" thick aluminum end cap in matte white

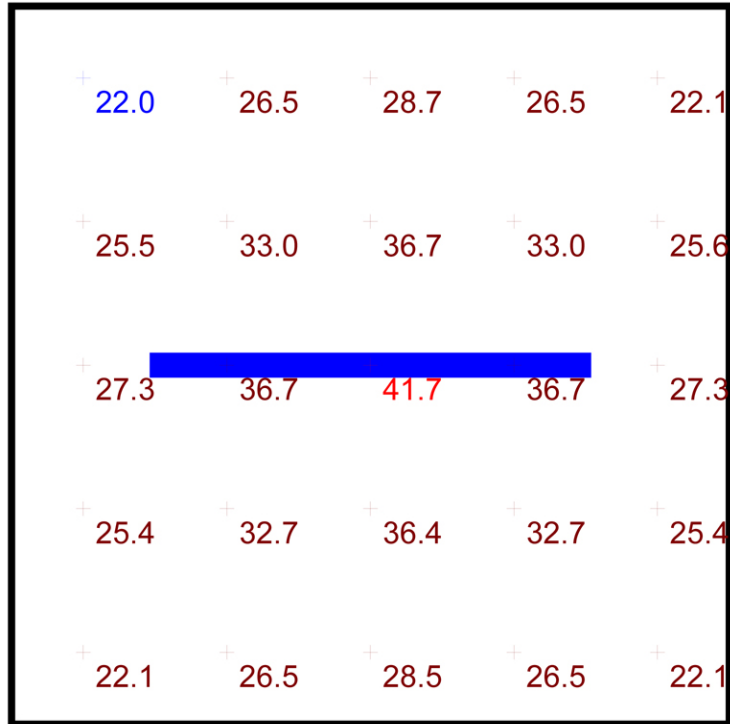
mounts to 7.7" dia. spun aluminum driver canopy in matte white finish. two 3ft/6ft stainless steel cables with field adjustable grippers allowing for exact desired mounting height. non power feed leg has 2" matte white canopy.

flexible planar LED lighting sheet wrapped around extruded aluminum core provides totally even luminance

# performance

## Statistics

Description	Symbol	Avg	Max	Min	Max/Min	Avg/Min
i.rod.4.hrz	+	29.1 fc	41.7 fc	22.0 fc	1.9:1	1.3:1

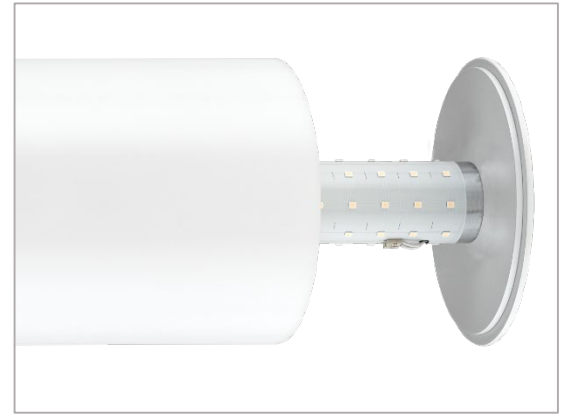
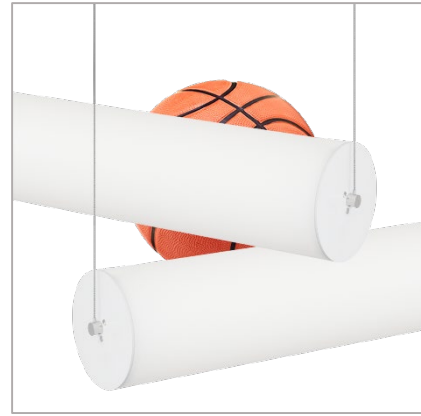


Plan View  
Scale - 1" = 2ft



- 10' x 10' x 10'H space
- 80/50/20 reflectances
- bottom of fixture at 8' aff
- FC readings at 2.5' aff
- layout conducted using P9172 7500 lumens (HX) output unit





[www.impactitg.com](http://www.impactitg.com)

- spec sheet and color chart
- photometric files and BIM models
- built to order in Saint Louis, MO, USA
- 4-week lead time

i.rod.6.hrz™ 5-slider

